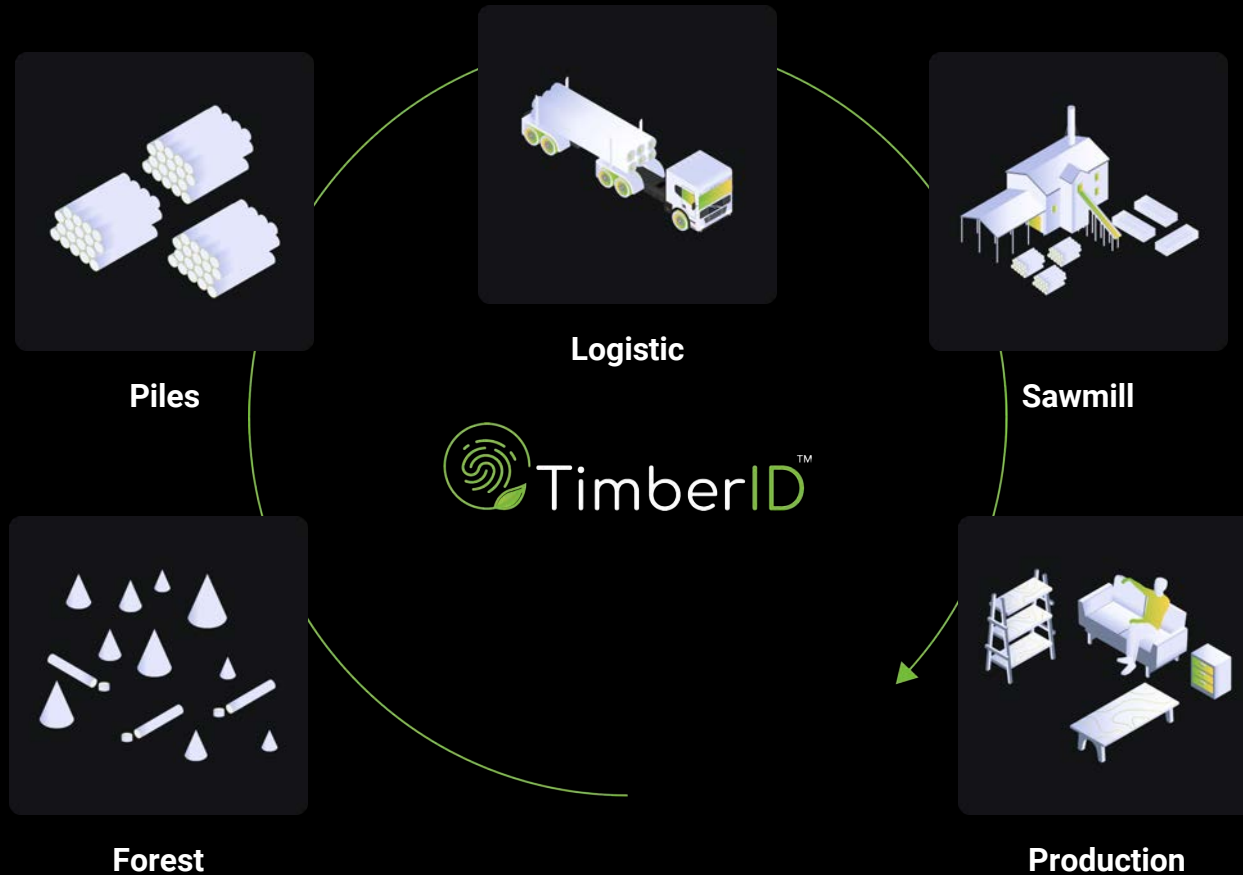




Traceability Transparency
Harvested Timber Provenance
Digitalization

From forest to a final wooden product



Solving the requirements of strong traceability and transparency obligations



TIMESTAMP 2022.12.11 14:22:11 LAT 50.637403, LON 10.800414

Sustainable forest management and reporting impacts carbon retention



**Digital Big Data are enabling
carbon footprint monitoring**

Cost-effective marking method

Eco friendly eliminating consumables

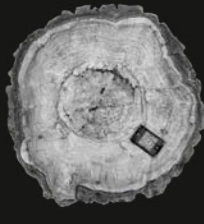
EXISTING SOLUTIONS



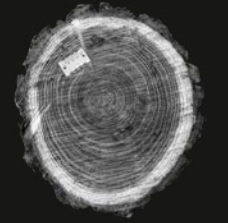
RFID



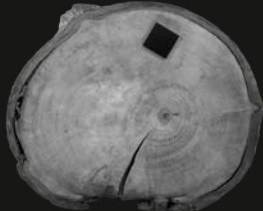
Paint



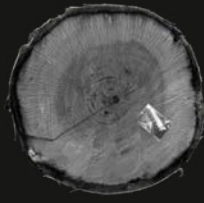
Tags



Metal



Electronic



Foil

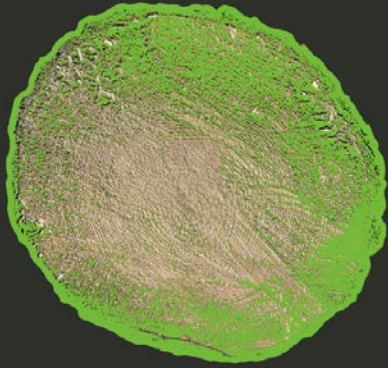


INVENTION



Dcode

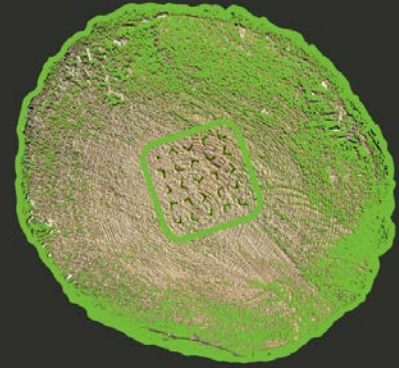
Solutions



Fingerprint Signature



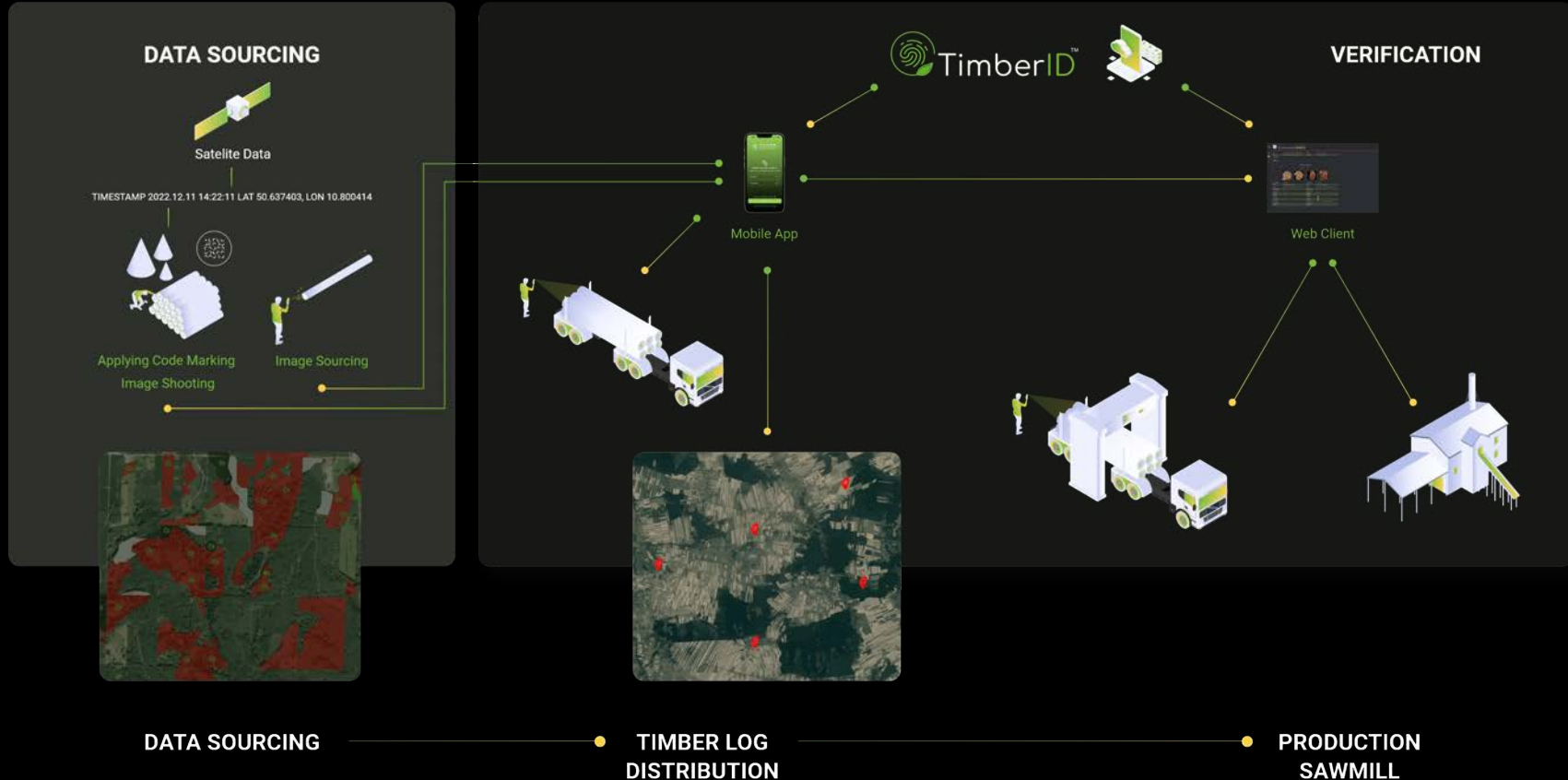
Encrypted Information



Timber Identification

Timber Identification is a ground-breaking DeepTech solution combining AI/ML image processing, analysis and recognition with a proprietary unique variable code marking technology, delivering ~100% accuracy in data processing.

Sealed chain of custody



The image displays five screenshots of the TimberID web application interface, arranged in a collage. The top-left screenshot shows the 'Statistics' dashboard, featuring several bar charts for storage, transfer, and requests. The top-right screenshot shows the 'Verification Details' page for a specific timber lot. The bottom-left screenshot shows the 'Map Details' page with a satellite map of a forest area. The bottom-right screenshot shows a detailed view of a timber lot with its attributes. The central part of the collage shows a browser window with the TimberID logo and navigation menu.

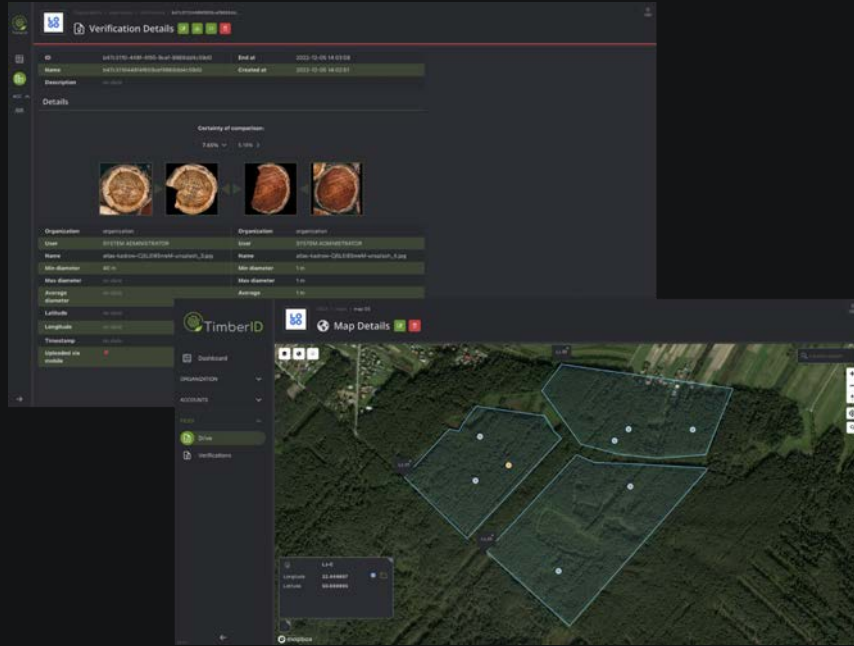
SaaS Platform

TimberID solution is an AWS cloud global platform delivering multiple services powered by proprietary AI/ML processing engines securing system scalability and redundancy in a multitenancy model.

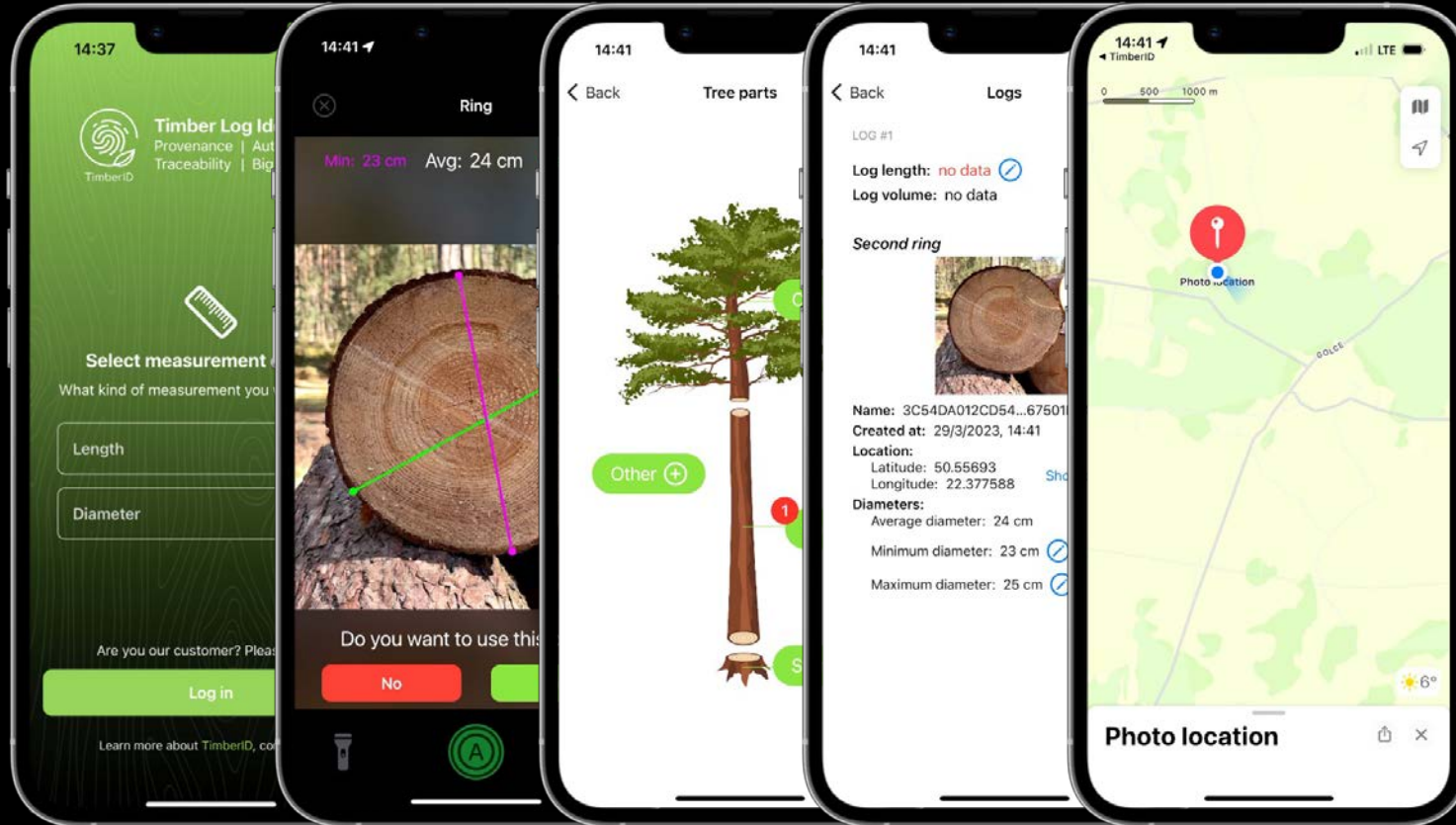
Customers are benefiting from system functionality by using web client interface managing own data.

Data files are saved for further processing on a verification request.

Customer friendly interface allows a user to view selected forest area, each log provenance and inventory data with, robust business intelligence for reporting and analysis, seamless API connectivity for customised integrations.



Delivering data sourcing and providing verification



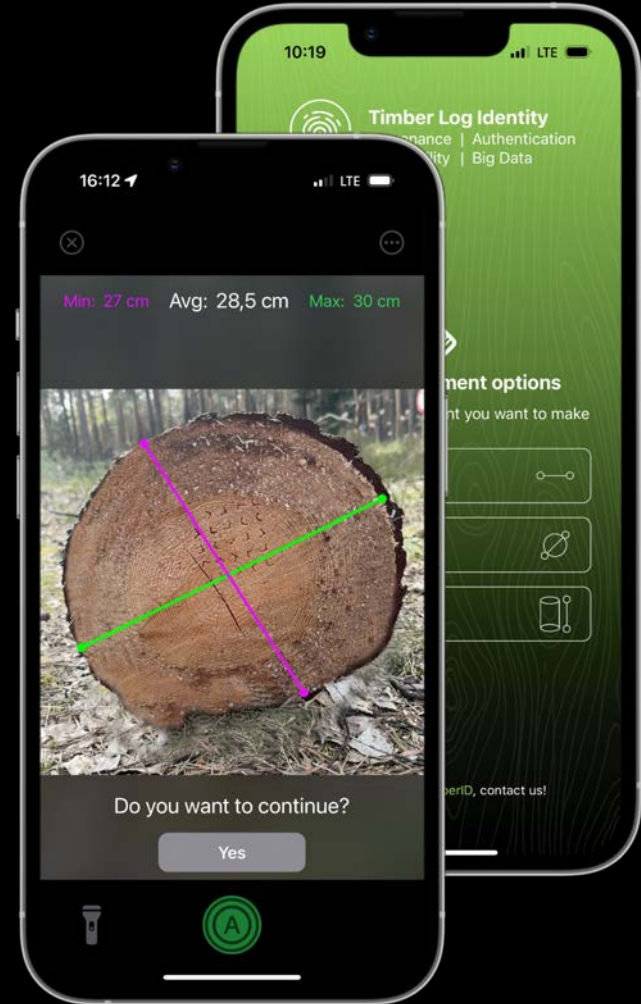
Mobile Apps

Combining proprietary AI capabilities and IOS built-in functionalities for timber log processing and complex data collection the TimberID app delivers accurate image sourcing and measurement data.

App is navigating and guiding a user in real time to use available functionalities in a fully automated manner.

iPhone Pro commencing version12 is equipped with lidar enabling creation of app innovative functionalities.

App is set to be used offline, while data synchronisation occurs when network connectivity is set.





Single Log Measurement

LIDAR is a remote sensing technology delivering an accurate data sourcing. TimberID is now capable the process timber log measurements using the built-in LIDAR functionality in iPhone. TimberID is offering simplicity and full automation of the measurement process.

Click on a reference point on of a log ring, walk along the log, repeat the click on the other side and view the length result.

Seamlessly scan both rings and view the diameter size and total volume in cubic meters.

Enabling single log measurement irrespective of the location, on the ground or on a pile.

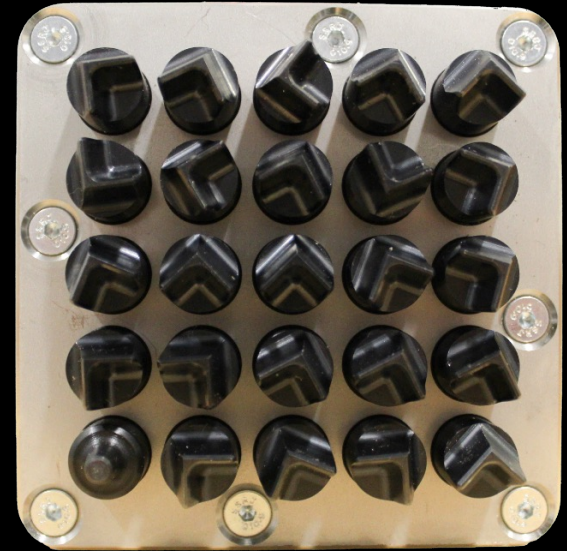
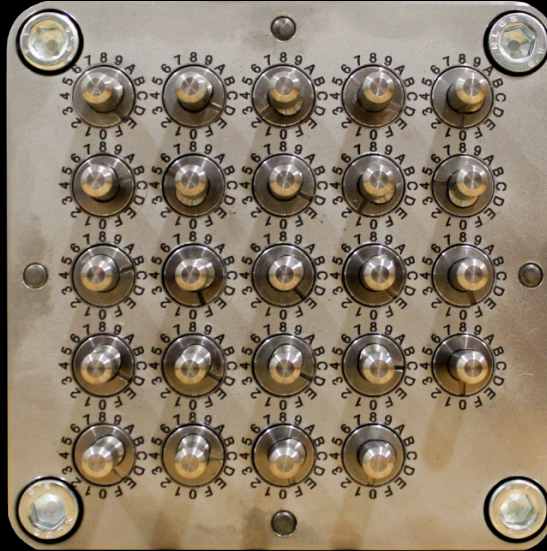
Enjoy the simplicity and precision.

Timber identification solution

Accuracy level - geo-localization 2m, time 1 sec



Marker head



The hammer marker head has been designed and build for best performance at the forest environment.

Adopters will recall the markers used by grandfathers and learn the simple way of use.

The setting area is clearly displaying all required information for adjustments.

Happy marking.

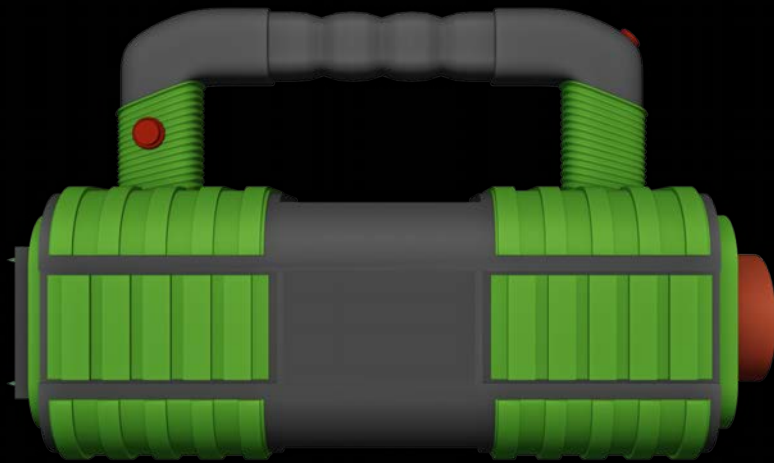


EDG

EDG (Electronic Dcode Generator), portable device for delivering variable code creation for use in DMH series units.

The device is based on the use of positioning satellite signals available in a given region of the world.

Using satellite signals of the European Galileo system (American GPS, Russian GLONASS or Chinese BeiDou) a unique Dcode is generated at the user's request, delivering a geo-localization accuracy on a 2m level, timestamp accuracy to a one second level.



C O M I N G S O O N

DMA-5

The DMA -5 (Dcode Marker Automated) is a semi-automated tool to indenting a hammer code mark on the timber ring.

The marking head is consisting in the form of 24 individually rotating stamps set at a defined angle arranged side by side and one fixed stamp of a surface size of 10X10 cm, delivering a geo-localization accuracy on a 2m level, timestamp accuracy to a one second level.

The EDG system is integrated, all code stamps are set automatically.

By using electric or pneumatic energy supply to the DMA unit, the code marking indenting on a timber ring is being applied.

An aerial photograph showing a logging operation within a dense forest. A dirt road runs vertically through the center-left. To the right of the road, there is a clearing with several buildings, including a large one with a long, low roof. A yellow excavator is visible in the clearing. The surrounding area is filled with lush green trees.

**Be a part of the TimberID story!
Trees can't talk, you take actions!**



Swapan Chaudhuri | Cofounder and CEO

swapan@deeplai.com

[@swapan](#)

M +48607997967

[watch video](#)

deeplai.com